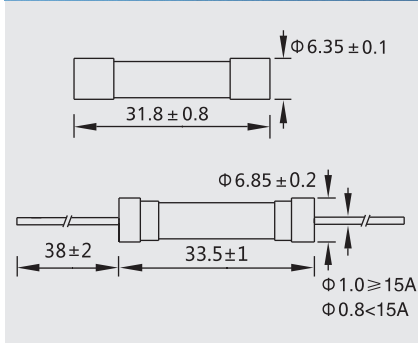
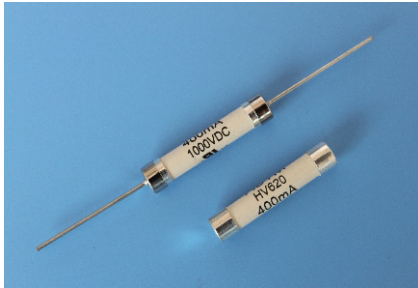


# 6HV $\Phi 6.35 \times 32$ RoHS Compliant



## 陶瓷保险丝管(快断型)

### Ceramic Tube Fuse (Fast-Acting) 1000V/660V/600V



**测试标准:**

**Testing Standard:**  
UL248-1 UL248-14

**额定分断能力:**

**Interrupting Rating:**  
10K Amperes at 600V DC (0.1-40A)  
10K Amperes at 1000V DC (0.1-3.15A)  
10K Amperes at 660V AC/DC (0.1-40A)

**工作温度:**

**Operating Temperature:**  
-55°C ~ +125°C

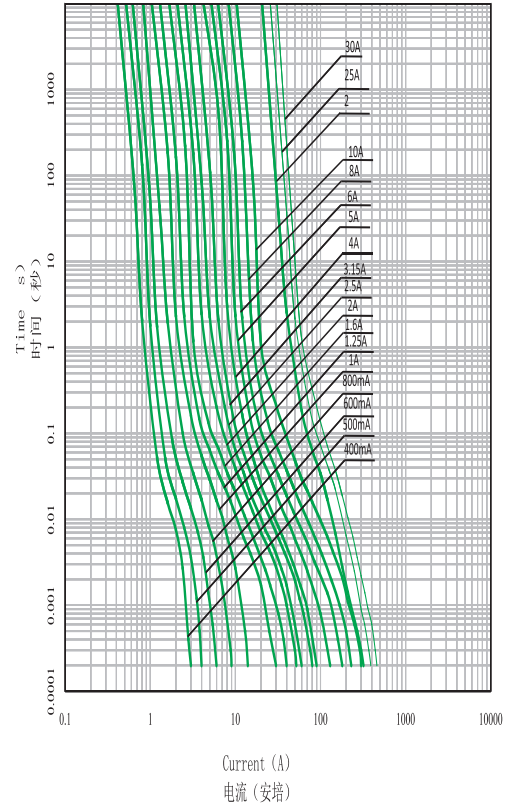
**材料:**

**Materials:**  
End cap: nickel plated brass  
Ceramic tube: ceramic  
Lead wire: tinned copper wire  
Inner cap: silver plating

**焊接方法:**

**Soldering Method:**  
Wave soldering: 260°C, 10s max  
Manual soldering: 350°C, 5s max

Time-Current Characteristics



**电气特性: Electrical Characteristics**

额定电流的% % of Ampere Rating	熔断时间 Opening Time
100%	4 hours Min(大于4小时)
250%	120 s Max(小于120秒)

目录编号: Catalog No.M:1000V L:660V K:600V

带引线产品目录编号后加"P":Suffix"P"for Lead Type After Catalog No.

目录编号 Catalog No.	额定电流 Ampere Rating	额定电压 Voltage Rating	熔化热能 <sup>2</sup> Melting Integral (A <sup>2</sup> .S)	认证
				● 表示已获认证 ● 表示认证中 
6HV0100M/L/K	100mA	1000V/660V/600V	0.01	●
6HV0200M/L/K	200mA	1000V/660V/600V	0.03	●
6HV0250M/L/K	250mA	1000V/660V/600V	0.04	●
6HV0400M/L/K	400mA	1000V/660V/600V	0.05	●
6HV0500M/L/K	500mA	1000V/660V/600V	0.10	●
6HV0600M/L/K	600mA	1000V/660V/600V	0.16	●
6HV0600M/L/K	800mA	1000V/660V/600V	0.3	●
6HV1100M/L/K	1A	1000V/660V/600V	0.4	●
6HV1125M/L/K	1.25A	1000V/660V/600V	1.0	●
6HV1160M/L/K	1.6A	1000V/660V/600V	3.2	●
6HV1200M/L/K	2A	1000V/660V/600V	5.0	●
6HV1250M/L/K	2.5A	1000V/660V/600V	8.0	●
6HV1315M/L/K	3.15A	1000V/660V/600V	13	●
6HV1400M/L/K	4A	1000V/660V/600V	20	●
6HV1500M/L/K	5A	1000V/660V/600V	34	●
6HV1600M/L/K	6A	1000V/660V/600V	58	●
6HV1800M/L/K	8A	1000V/660V/600V	97	●
6HV2100M/L/K	10A	1000V/660V/600V	204	●
6HV2120M/L/K	12A	1000V/660V/600V	280	●
6HV2160M/L/K	16A	1000V/660V/600V	387	●
6HV2200M/L/K	20A	1000V/660V/600V	540	●
6HV2250M/L/K	25A	1000V/660V/600V	980	●
6HV2300M/L/K	30A	1000V/660V/600V	1843	●
6HV2350M/L/K	35A	1000V/660V/600V	2315	●
6HV2400M/L/K	40A	1000V/660V/600V	3520	●